





Accessories

Sensors & Switches	74
DT Detector Half Kits	79
Backsense Network Radar	80
Custom Engraved Panels	83
CAN Connectors	86
HD30 Breakaway	90
Wiring, Accessories & Tools	92

Accessories

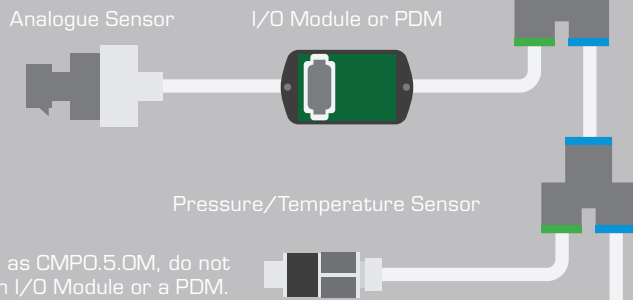
Sensors & Switches



- Wide range of sensors used to introduce input variables into the Controller Area Network (CAN).
- Side Mount Level switches are ideal for tank level applications with most commonly used liquids.
- Multi-voltage on most sensors & switches.
- An I/O Module or PDM provides a pathway for analogue signals into the network, these can be found on page 46 & 50-51.
- All sensors environmentally sealed – IP67.

Does your sensor require a module?

Analogue Sensors require an I/O Module (found on page 46) or a PDM (found on page 50-51) in order to transmit sensor data onto the Controller Area Network (CAN).



CAN Sensors, such as CMP0.5.OM, do not require an I/O Module or a PDM.

Controller Area Network



★ **Featured**
Made in Europe



Sensors – CAN – Pressure & Temperature ★

Range (Bar)	0 – 0.5	0 – 4	0 – 16	0 – 25	0 – 100	0 – 400
Part No.	CMP0.5.OM	CMP4.OM	CMP16.OM	CMP25.OM	CMP100.OM	CMP400.OM

Ingress Protection: IP67
 Detection range: -30°C to 150°C
 Mounting Thread: G 1/4"
 Voltage: 9-32V

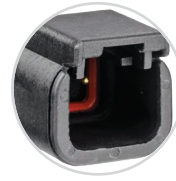


115722

3 pin
TE DEUTSCH DT
Series connector.
Includes mount



740114



2 Pin TE DEUTSCH
DTM Series connector.
Supplied with mating connector

★ **Featured**



MSTS-DTM-CLOSED



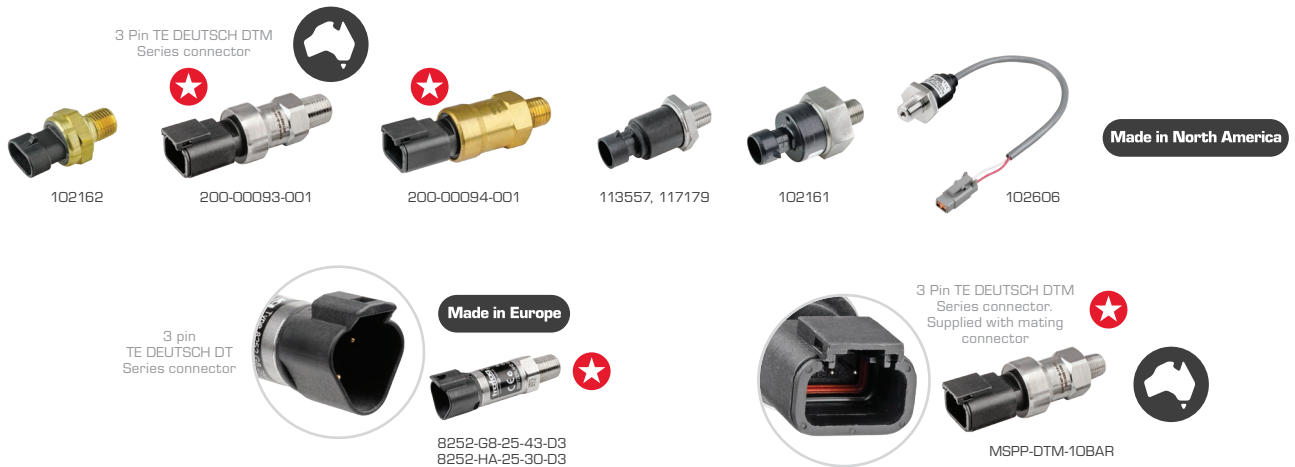
MSTS-DTM-OPEN



Sensors – Analogue – Temperature

Part No.	Voltage	Output Signal	Range	Mounting Thread	Notes
115722	9–32	0V to 2V	-40°C – 120°C	—	Includes mount
740114	9–32	0.05Ω to 100Ω	-40°C – 150°C	1/4" NPT	
MSTS-DTM-CLOSED ★	5	0V to 5V	-30°C – 150°C	1/8" NPT	Includes mating connector
MSTS-DTM-OPEN ★	5	0V to 5V	-30°C – 150°C	1/8" NPT	Includes mating connector

Ingress Protection: IP67



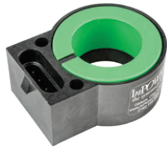
Sensors – Analogue – Pressure

Part No.	Voltage	Output Signal	Range (PSI)	Mounting Thread	Notes
102162	4–8	0V to 5V	0 – 5	1/4" NPT	
200-00093-001 ★	5	0V to 5V	0 – 5	1/4" NPT	Stainless steel
200-00094-001 ★	5	0V to 5V	0 – 5	1/4" NPT	Brass
113557	9–32	0V to 5V	0 – 300	1/4" NPT	
102161	9–32	0V to 5V	0 – 500	1/4" NPT	
117179	9–32	0V to 5V	0 – 600	1/4" NPT	
102606	9–32	4mA to 20mA	0 – 7500	1/4" NPT	
8252-G8-25-43-D3 ★	9–32	0V to 5V	0 – 150	1/8" NPT	
8252-HA-25-30-D3 ★	9–32	0V to 5V	0 – 300	1/4" NPT	
MSPD-DTM-10BAR ★	5	0V to 5V	0 – 145	1/8" NPT	Includes mating connector

Ingress Protection: IP67



Accessories



DCS35-300-2



102714A

Made in North America

Sensors – Analogue – Current & Flow

Part No.	Voltage	Sensor Type	Output Signal	Range
DCS35-300-2	9-32	Current	0V to 5V	-300A – 300A
102714A	9-32	Flow	±5V	Frequency

Ingress Protection: IP67



RKT5-228-2M

2m female to tail
M12 network cable – 5 pin



CONNKIT-CURRENT



CONNKIT-TEMPSENSOR



CONNKIT-THERMISTOR



CONNKIT-ITL-DTM



CONNKIT-TRANSITL



CONNKIT-TRANSHIPSI



CONNKIT-TRANSPSI

Sensors – Connection Kits

Part No.	Suits	
RKT5-228-2M	CAN – Pressure & Temperature	All
CONNKIT-CURRENT	Analogue – Current	DCS35-300-2, DCS36-300-2
CONNKIT-TEMPSENSOR	Analogue – Temperature, Pressure	115722, 8252-G8-25-43-D3, 8252-HA-25-30-D3
CONNKIT-THERMISTOR	Analogue – Thermistor	740114
CONNKIT-ITL-DTM	Analogue – Pressure	200-00093-001
CONNKIT-TRANSITL	Analogue – Pressure	102162
CONNKIT-TRANSHIPSI	Analogue – Pressure	102606
CONNKIT-TRANSPSI	Analogue – Pressure, Flow	102714A, 113557, 117179, 102161

Crimping tools can be found on page 96.

DT04-4P-5V

Recommended to also install a 1A (maximum) fuse to the 9-32VDC input. Reverse polarity protected.

Do not remove ground supply while device is powered or damage to the device can occur.

Pin 1 – Ground, Pin 2 – Output 1 (5VDC),
Pin 3 – Output 2 (5VDC),
Pin 4 – Input (9-32VDC), fused to 1A (maximum)



DT04-4P-5V

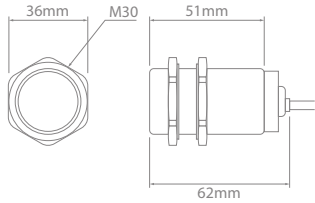
Optional accessory
Flow Sensor Boss.
Used to facilitate mounting
of Flow Sensor



SFM

Sensors – Analogue – Accessories

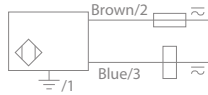
Part No.	Description	Suits
DT04-4P-5V	5V Regulator	Pressure (all)
SFM	Mounting Boss	Flow (102714A)



★ Featured



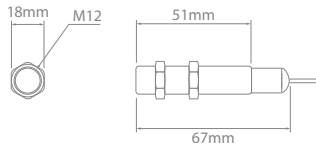
12-0001



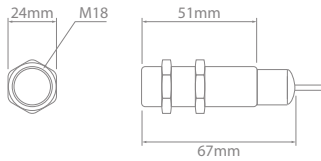
Made in Europe



Ensure maximum current load is not exceeded. Compatible with automotive relays & electronic modules.

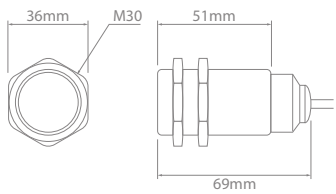


12-0120



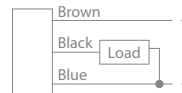
12-0180

★ Featured



12-0300

Made in North America



Switches – Inductive Proximity ★

Part No.	Voltage Type	Voltage	Output Type	Output Function	Sensing Range (mm)	IP Rating	Switching Capacity (mA)	
							AC	DC
12-0001	AC/DC	24–240	—	N/O	10	68, 6K9K	5–300	5–200
12-0120	DC	10–30	PNP	N/O	2	67	—	100
12-0180	DC	10–30	PNP	N/O	5	67	—	100
12-0300	DC	10–30	PNP	N/O	10	67	—	100

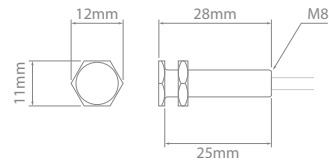
Cable Length: 2m



Accessories



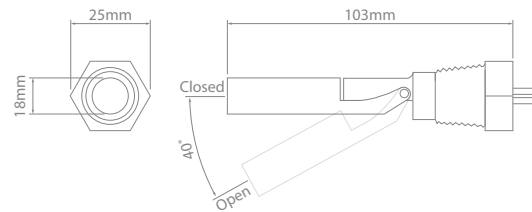
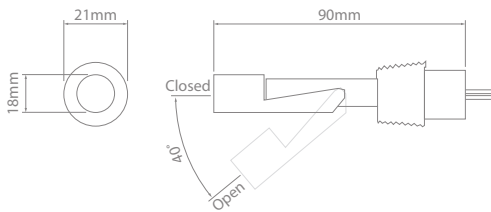
★ Featured



Switches – Proximity Reed ★

Part No.	Contact Type	Switching Distance (mm)	Voltage AC/DC	Current Rating (A)	Contact Resistance (Ohms)	Cable Length (mm)	Material
12-0050	N/O	10	10-48	0.5	0.2	280	Brass

Operating temperature: -20°C to 85°C



12-0030

★ Featured



200-2110-02-0

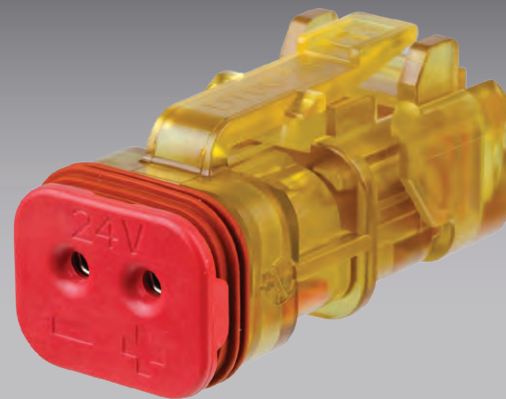
Switches – Side Mount Level ★

Part No.	Contact Type	Switching Angle	Mounting Size	Switching Voltage AC DC	Current Rating (A)	Cable Length (mm)	Housing
12-0030	N/O & N/C	40°	1/2" NPT	300 300	1.0	1000	Nylon
200-2110-02-0	N/O & N/C	40°	1/2" NPT	250 200	1.0	500	Nylon

Functions as N/C or N/O dependent on fitting orientation.

Operating temperature:
 12-0030: -20°C to 75°C
 200-210-02-0: -30°C to 130°C

- Transparent housing with integrated LED on wedgelock for quick circuit diagnosis.
- Colour coded wedgelocks for operating voltages, 12V (yellow) and 24V (red).
- Joint retention fingers allow both contacts to be removed at the same time.
- Compatible with Pulse Width Modulated control.
- Sold as kit including nickel-plated or green band contacts.
- Environmentally sealed – IP68, IP6K9K, when installed to manufacturer's specifications.
- Industry proven TE DEUTSCH DT Series.
- Latched mating.



Housing : Ultem
Seal : Silicone Rubber
Wedgelock : Thermoplastic
Contact Size : 16
Contact Rating : 13A @ 125°C
Shock : 50G
Vibration : 20G rms 10 – 2000Hz
Approvals : 20mm Flame Test per Standard UL-94
Ingress Protection : IP68, IP6K9K
Operating Temperature : -55°C to 125°C



Half Kits

Half Kits contain all components to make one half of a connection.

Each kit contains 2 x contacts and a DT Detector receptacle with a DT Detector Wedgelock.



W2S-SDT-24V



W2S-SDT-12V



DT06-2S-SDT-CE27



DTLED-24V-1

★ **Featured**



DTLED-12V-4



DT Detector Half Kits

Part No.	Voltage	Wedgelock Colour	Socket Type	Wire Size	
				AWG	mm ²
DTLED-12V-1	12	Yellow	0462-209-16141 – Green Band, Nickel-plating	14	1.0 – 2.0
DTLED-24V-1	24	Red	0462-209-16141 – Green Band, Nickel-plating	14	1.0 – 2.0
DTLED-12V-3	12	Yellow	0462-201-16141 – Nickel-plating	20 – 16	0.5 – 1.0
DTLED-24V-3	24	Red	0462-201-16141 – Nickel-plating	20 – 16	0.5 – 1.0
DTLED-12V-4	12	Yellow	0462-209-1631 – Green Band, Gold-plating	14	1.0 – 2.0
DTLED-24V-4	24	Red	0462-209-1631 – Green Band, Gold-plating	14	1.0 – 2.0

Kit Contents:
 1 x DT Detector Receptacle (DT06-2S-SDT-CE27)
 1 x DT Detector Wedgelock (W2S-SDT-12V or W2S-SDT-24V)
 2 x Solid Socket



Accessories

Backsense Network Radar



Monitor not included with kit

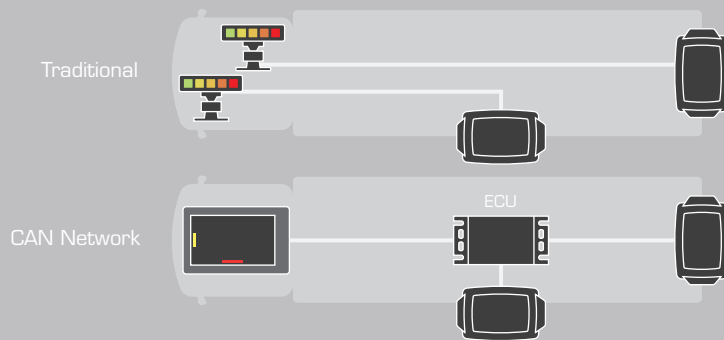


- Overlay detection data for up to 2 radar sensors on a single monitor.
- Compiles with CAN 2.0A Base Frame Format.
- Detects multiple moving and stationary objects.
- High frequency continuous wave provides increased reliability & low false alarm rates.
- Adjustable detection range up to 30m.
- 3 trigger inputs used for activating components such as alarms and beacons.
- Environmentally sealed sensor – IP69K
- Sensor can be steam & pressure cleaned.
- Multi-voltage.
- 3 year warranty.

Voltage :	12–24V
Current Draw :	0.4A
Radar Frequency :	24.05GHz to 24.25GHz
Weight :	Radar Sensor 0.7kg
Vibration :	8.3G
Shock :	100G
EMC :	CE & 'e' marked
Operating Temperature :	-40°C to 85°C
Ingress Protection :	IP69K

Backsense Network Radar

Brigade's Backsense® Network Radar is the next generation of radar-based obstacle detection. Due to the number of complex blind spots on a vehicle, a single radar cannot always provide the detection required. Additionally, multiple in-cab displays for multiple radars can be more of a distraction than a benefit. Aimed at OEM and specialist applications, Brigade's Network Radar OSD kit allows you to connect and link 2 sensors to cover large, sometimes complex blind spot zones around a vehicle or machine.



On-Screen Display

Multiple radars with individual in-cab displays can cause confusion and also be a challenge to install. Brigade's latest innovation, the Backsense® OSD (On-screen Display) ECU allows for the use of 2 Backsense® Network Radar units to be combined with any Brigade Backeye® camera system.

Radar detection data is overlaid transparently* along the edge of the monitor so as not to obscure the camera image with the audible warning via the monitor speakers.

* Transparency level can be adjusted via software.

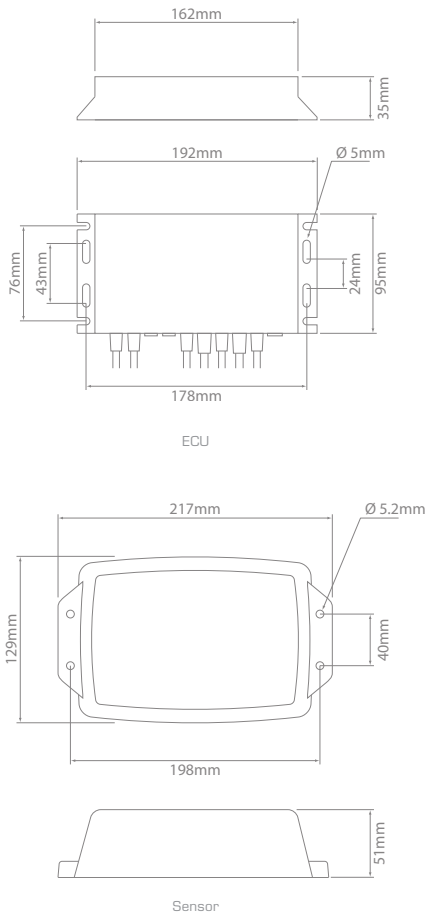
When an object is detected in the YELLOW zone, the associated on-screen indicator will turn yellow and a pulsed audible alert is played through the monitor's speaker. 🗣️)))))) 🗣️



When object is detected in RED zone, the associated on-screen indicator will turn red and a constant audible alert is played through the monitor's speaker. 🗣️))))))))) 🗣️



Each radar sensors detection notification can be assigned to one of eight predefined positions overlaid around the edge of a monitor.

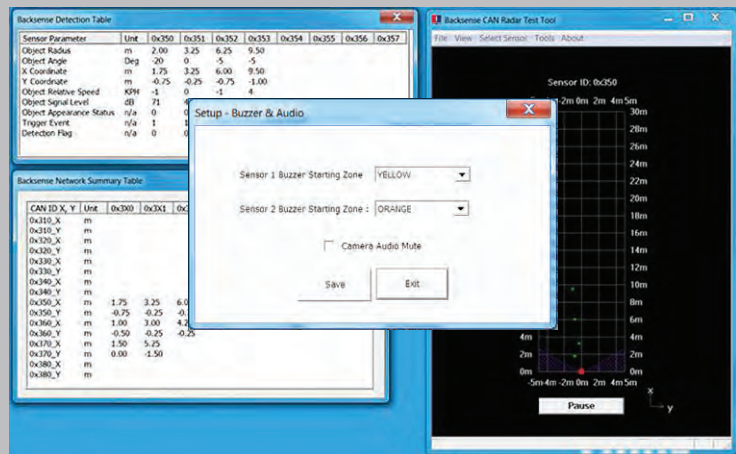


Configurable

Backsense® Network Radar with OSD Kit is supplied with easy to use PC software used to adjust the following parameters:

- Detection zone length & width
- Blind area mapping
- Buzzer starting zone
- Trigger output length

Download the latest software and manual from ionnic.com



Backsense Network Radar – OSD Kit

Part No.	Detection Distance (m)	Detection Width (m)	Camera Inputs	Triggers	
				Input	Output*
BS-9001-OSD	3 – 30	2 – 10	2	3	3 x 0.5A

Supports up to 2 Backsense® Network Radars.

Compatible with Brigade Backeye systems, including Backeye 360 and Brigade Digital Mobile Recorder.

* 1 x output for alarm use only.

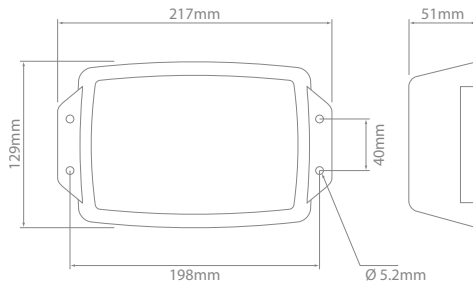
Kit contents:

- 1 x Sensor Unit (BS-9000)
- 1 x OSD ECU
- 3 x Network Y Cable (BS-O0NYC)
- 2 x CAN Bus Terminator (BS-O0NT)
- 1 x 9m Extension Cable (BS-O9DCX)
- 1 x Network Power Input Cable (BS-O2PIC)
- Sensor Mounting Hardware

Manual & software available on IONNIC website



Accessories



CAN Integration BS-9000

The Backsense® Network Radar (BS-9000) can be integrated into a Controller Area Network (CAN) and configured to interact and display sensor data on existing components and screens.

Backsense Network Radar – Sensor

Part No.	Description	CAN	Baud Rate	Detection Distance (m)	Detection Width (m)
BS-9000	Single network radar sensor unit	SAE J1939	500K	3 – 30	2 – 10

Extensive Brigade Range Available

For the entire range of compatible Brigade systems, including the Backeye® 360 camera and the Brigade Mobile Digital Recorder, see the Safety Systems 2022 catalogue.



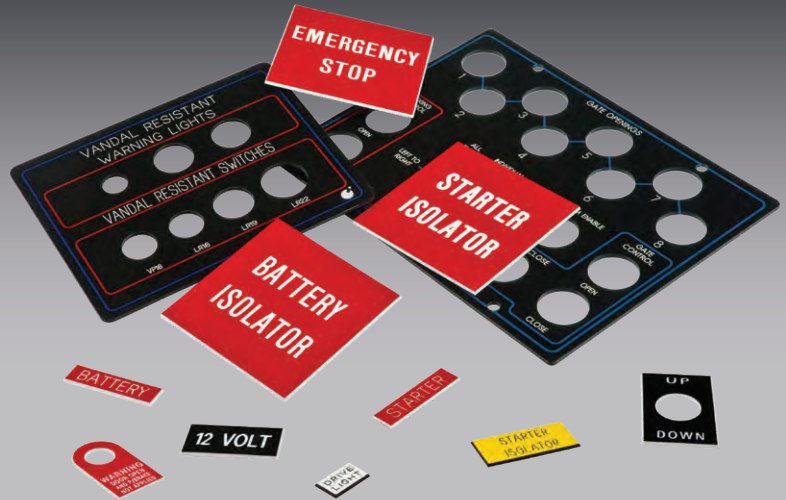
Download the complete catalogue from ionnic.com or free call from within Australia 1800 724 690



Backsense Network Radar – Accessories

Part No.	Description
BS-05B	Adjustable sensor bracket Supplied with bolts, washers and nylock nuts.
BS-05DCX	Extension cable – 5m
BS-09DCX	Extension cable – 9m
BS-00NYC	Network 'Y' cable
BS-00NT	120 Ohm CAN bus terminator
BS-02PIC	Network power input cable – 2m

- Front or rear engraving.
- Large range of colour combinations including metallic finishes.
- Materials available for use with backlighting.
- UV Stabilised.
- Ideal for:
 - Safety signage
 - Control panels
 - Product tags
 - Name plates



Engraver Type : Rotary Flat Bed
 Maximum Size : 500mm x 380mm
 Materials : Laminated Impact Acrylic
 UV Stabilised

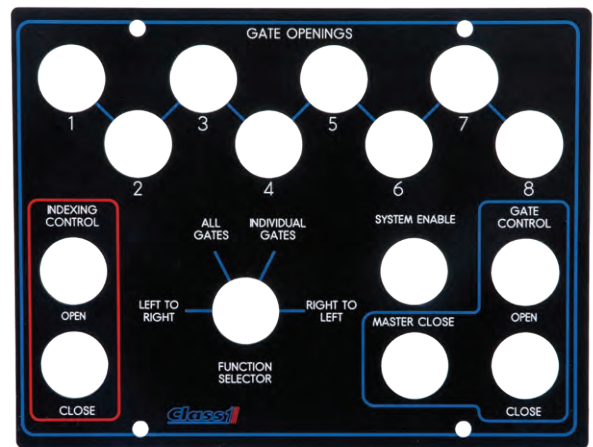


Custom Engraving

Custom engraving is available for the creation of control panels and name plates up to a maximum size of 500mm x 380mm.

Choose from a large range of colours with some materials suitable for use with backlighting.

For further information ask your local reseller or enquire online at ionnic.com.



Waste Management



Smart Touch



HD PDM



PDM



Backsense
Radar



USM2



CAN Pressure &
Temp Sensors



I/O Module



UV450



Environment Refuse Trucks

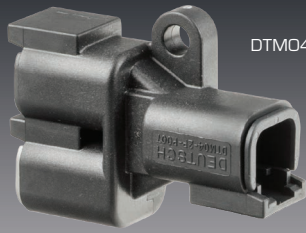
Class 1's vehicle multiplex systems are well known throughout the heavy vehicle industry for improving reliability, efficiency and safety operations.

With reduced wiring and robust components readily integrated, Class 1 are able to reduce the complexity of the electrical system and offer the user a comprehensive control solution.

- Switch operation
- Safety interlocking
- Blade Automation
- Diagnostics
- Lighting control

Accessories

CAN Connectors



DTM04-2P-P007



DT04-3P-P006



HD10-9-1939PE



DT04-3P-P007

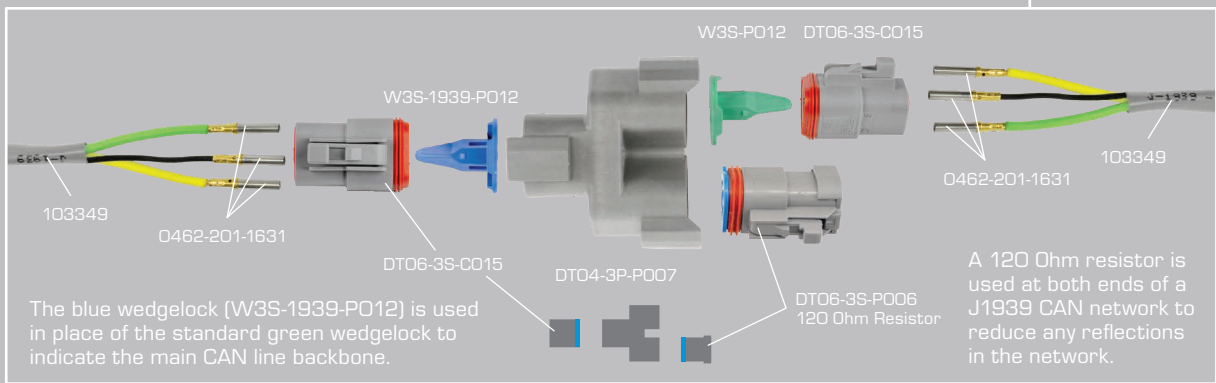
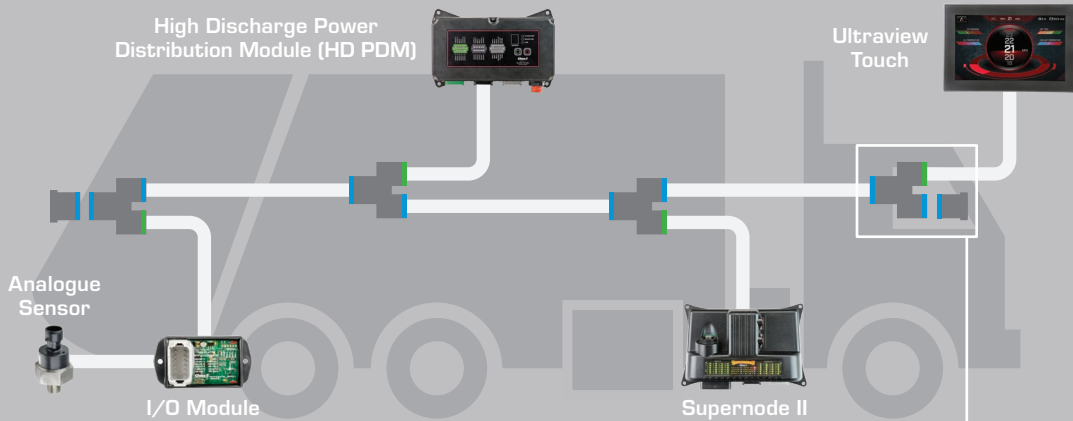


- Genuine TE DEUTSCH connectors.
- Environmentally sealed – IP68, IP6K9K, when installed to manufacturer's specifications.
- Multiple housing options available.
- Latched mating.
- Wedgelocks ensure contact alignment and retention.

Housing :	Thermoplastic
Seal :	Silicone Rubber
Wedglock :	Thermoplastic
Vibration :	20G rms 10 – 2000Hz
Approvals :	20mm Flame Test per Standard UL-94
Ingress Protection :	IP68, IP6K9K
Operating Temperature :	-55°C to 125°C

Controller Area Networks (CAN)

Controller Area Networks, or CAN are multiplexed control systems. Multiplexing allows multiple data signals to travel on the same wires, integrating separate electronic systems and applications to a single point of control and monitoring system.



J1939/11

J1939/11 is a 3-wire system that uses the TE DEUTSCH DT series connectors primarily for truck and bus. The DT series accepts size 16 contacts. Connector options include in-line, bulkhead, "Y" splitter, and terminating resistors.



DT06-3S-E008



DT06-3S-EP11



DT06-3S-P006



W3S-P012



W3S-1939



DT04-3P-E008



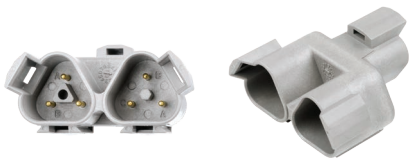
DT04-3P-P006



W3P



W3P-1939



DT04-3P-P007



O460-202-1631



O462-201-1631



1062-16-0144



CONNKIT-BBJUNCTION



CONNKIT-RESISTOR

CAN Connectors – J1939/11 – Common Components

Part No.	Description	Cavities/Circuits
DT06-3S-E008	DT Series – Plug – Heat shrink adaptor	3
DT06-3S-EP11	DT Series – Plug – Heat shrink adaptor – Black. Requires W3S-P012	3
DT06-3S-P006	DT Series – Plug – 120 Ohm Resistor. Includes wedgelock & contacts	3
W3S-P012	DT Series – Wedgelock – Plug – Green	3
W3S-1939	DT Series – Wedgelock – Plug – Blue	3
DT04-3P-E008	DT Series – Receptacle – Heat shrink adaptor	3
DT04-3P-P006	DT Series – Receptacle – 120 Ohm Resistor. Includes wedgelock & contacts	3
W3P	DT Series – Wedgelock – Receptacle – Green	3
W3P-1939	DT Series – Wedgelock – Receptacle – Blue	3
DT04-3P-P007	DT Series – Receptacle "Y" Piece. Includes wedgelocks & contacts	3
O460-202-1631	Contact – Pin – Solid – Gold-plated – Size 16	
O462-201-1631	Contact – Socket – Solid – Gold-plated – Size 16	
1062-16-0144	Contact – Socket – F-Crimp – Gold-plated – Size 16	
CONNKIT-BBJUNCTION	Connection Kit – CAN Splice. Used for splitting CAN Backbone	
Kit contents:		
1 x Receptacle – DT Series "Y" Piece (DT04-3P-P007)	1 x DT Series 120 Ohm Resistor (DT06-3S-P006)	2 x Wedgelock – Blue (W3S-1939-P012)
3 x Plug – DT Series – 3 Circuit (DT06-3S-C015)	9 x Contact – Socket – Gold-Plated (O462-201-1631)	1 x Wedgelock – Green (W3S-P012)
CONNKIT-RESISTOR	Connection Kit – CAN Splice with Resistor. Used for terminated CAN Backbone	
Kit contents:		
1 x Receptacle – DT Series "Y" Piece (DT04-3P-P007)	1 x DT Series 120 Ohm Resistor (DT06-3S-P006)	1 x Wedgelock – Blue (W3S-1939-P012)
2 x Plug – DT Series – 3 Circuit (DT06-3S-C015)	6 x Contact – Socket – Gold-Plated (O462-201-1631)	1 x Wedgelock – Green (W3S-P012)



Accessories

J1939/15

SAE J1939/15 defines the requirements for reduced physical layer 2-wire CAN systems consisting of an unshielded twisted pair of wires.



CAN Connectors – J1939/15 – Common Components

Part No.	Description	Cavities/Circuits
DTM06-2S-EP10	DTM Series – Plug – 120 Ohm Resistor – Black. Includes wedgelock & contacts	2
DTM06-2S-P006	DTM Series – Plug – 120 Ohm Resistor. Includes wedgelock & contacts	2
DTM04-2P-P006	DTM Series – Receptacle – 120 Ohm Resistor. Includes wedgelock & contacts	2
DTM06-2S-E005	DTM Series – Plug – End cap – Black	2
WM-2S	DTM Series – Wedgelock – Plug – Orange	2
WM-2SB	DTM Series – Wedgelock – Plug – Black	2
DTM04-2P-P007	DTM Series – Receptacle “Y” Piece – Black. Includes wedgelock & contacts	2
0460-202-2031	Contact – Pin – Solid – Gold-plated – Size 20	
0460-010-2031	Contact – Pin – Solid – Gold-plated – Size 20 – Purple Band	
1060-20-0144	Contact – Pin – F-Crimp – Gold-plated – Size 20	
0462-201-2031	Contact – Socket – Solid – Gold-plated – Size 20	
0462-005-2031	Contact – Socket – Solid – Gold-plated – Size 20 – Purple Band	
1062-20-0144	Contact – Socket – F-Crimp – Gold-plated – Size 20	
DTM2-J1939-KIT	DTM Series – 120 Ohm Resistor Kit Kit contents: 1 x Receptacle – DTM Series – 2 Circuit (DTM04-2P) 1 x Wedgelock – Orange (WM-2P)	1 x DTM Series 120 Ohm Resistor (DTM06-2S-P006) 2 x Contact – Pin – Gold-Plated (0460-202-2031) 1 x Mounting Clip (1011-026-0205)

J1939/13

J1939/13 is a system that uses the TE DEUTSCH HD10 series connectors for on-board diagnostics. The HD10 series accepts size 16 contacts.



HD10-9-1939PE



HD16-9-1939SE



0460-202-1631



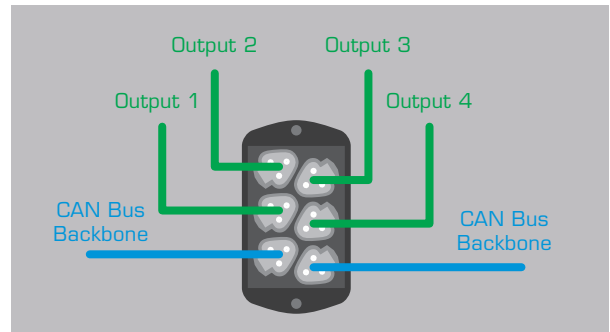
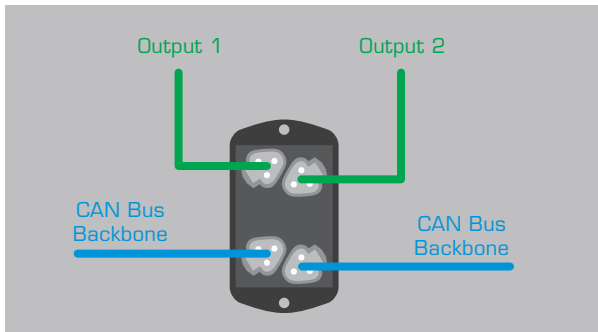
0462-201-1631



1062-16-0144

CAN Connectors – J1939/13 – Common Components

Part No.	Description	Cavities
HD10-9-1939PE	HD10 Series – Receptacle. Threaded rear – Black	9
HD16-9-1939SE	HD10 Series – Plug. Threaded rear – Black	9
0460-202-1631	Contact – Pin – Solid – Gold-plated – Size 16	
0462-201-1631	Contact – Socket – Solid – Gold-plated – Size 16	
1062-16-0144	Contact – Socket – F-Crimp – Gold-plated – Size 16	



CAN Connectors – J1939 Bus Splitter Kits ★

Part No.	Description
CONNKIT-4JUNCTION	CAN bus 2 branch hub with mating connectors + 120 Ohm resistor plug

- Kit Contents:
- 1 x CAN Bus 2 Branch Hub (CONNKIT-4)
 - 4 x Plug – DT Series – 3 Circuit (DT06-3S-CO15)
 - 1 x DT Series 120 Ohm Resistor (DT06-3S-P006)
 - 2 x Wedgelock – Green (W3S-P012)
 - 2 x Wedgelock – Blue (W3S-1939-PO12)
 - 12 x Contact – Socket – Gold-Plated (0462-201-1631)

Part No.	Description
CONNKIT-6JUNCTION	CAN bus 4 branch hub with mating connectors + 120 Ohm resistor plug

- Kit Contents:
- 1 x CAN Bus 4 Branch Hub (CONNKIT-6)
 - 6 x Plug – DT Series – 3 Circuit (DT06-3S-CO15)
 - 1 x DT Series 120 Ohm Resistor (DT06-3S-P006)
 - 4 x Wedgelock – Green (W3S-P012)
 - 2 x Wedgelock – Blue (W3S-1939-PO12)
 - 18 x Contact – Socket – Gold-Plated (0462-201-1631)



Accessories

HD30 Breakaway



- Breakaway coupling specifically designed to prevent damage to vehicle wiring and/or the attached implement by safely disconnecting and separating from vehicle in the event of an operator driving away without disconnecting beforehand.
- Dust cap suits all shell size 24 HD30 and HDP20 series connectors.
- Ideal for use in agricultural equipment as well as the truck, bus, mining and construction industry.
- Environmentally sealed – IP68, IP6K9K, when installed to manufacturer's specifications.
- Resistant to most fluids in industrial applications.



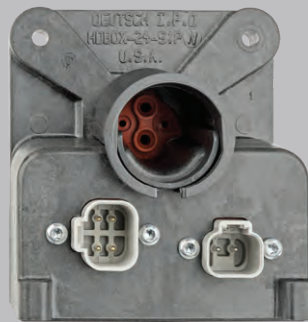
Housing :	HD30 Series	Aluminium
	DT Series	Thermoplastic
Seal :		Silicone Rubber
Shock :		50G
Vibration :		20G rms 10 – 2000Hz
Approvals :	20mm Flame Test per Standard UL-94	
Ingress Protection :	IP68, IP6K9K	
Operating Temperature :	-55°C to 125°C	

HDBOX-24-91PN – Breakaway CAN Termination Assembly

Originally designed for agricultural applications, the TE DEUTSCH HDBOX-24-91PN Breakaway CAN Termination Assembly creates a communication pathway between an on-board CAN system and the electronic components on an attached implement.

The HDBox, which holds two DT13 connectors and an HD30 Series receptacle, mounts on the vehicle and mates with an HD30 Series plug connector featuring a breakaway coupling ring.

TE DEUTSCH breakaway couplings are designed to prevent damage to the CAN wiring of the vehicle and/or the attached implement by disconnecting and separating from the vehicle in the event of an operator driving away without disconnecting beforehand.

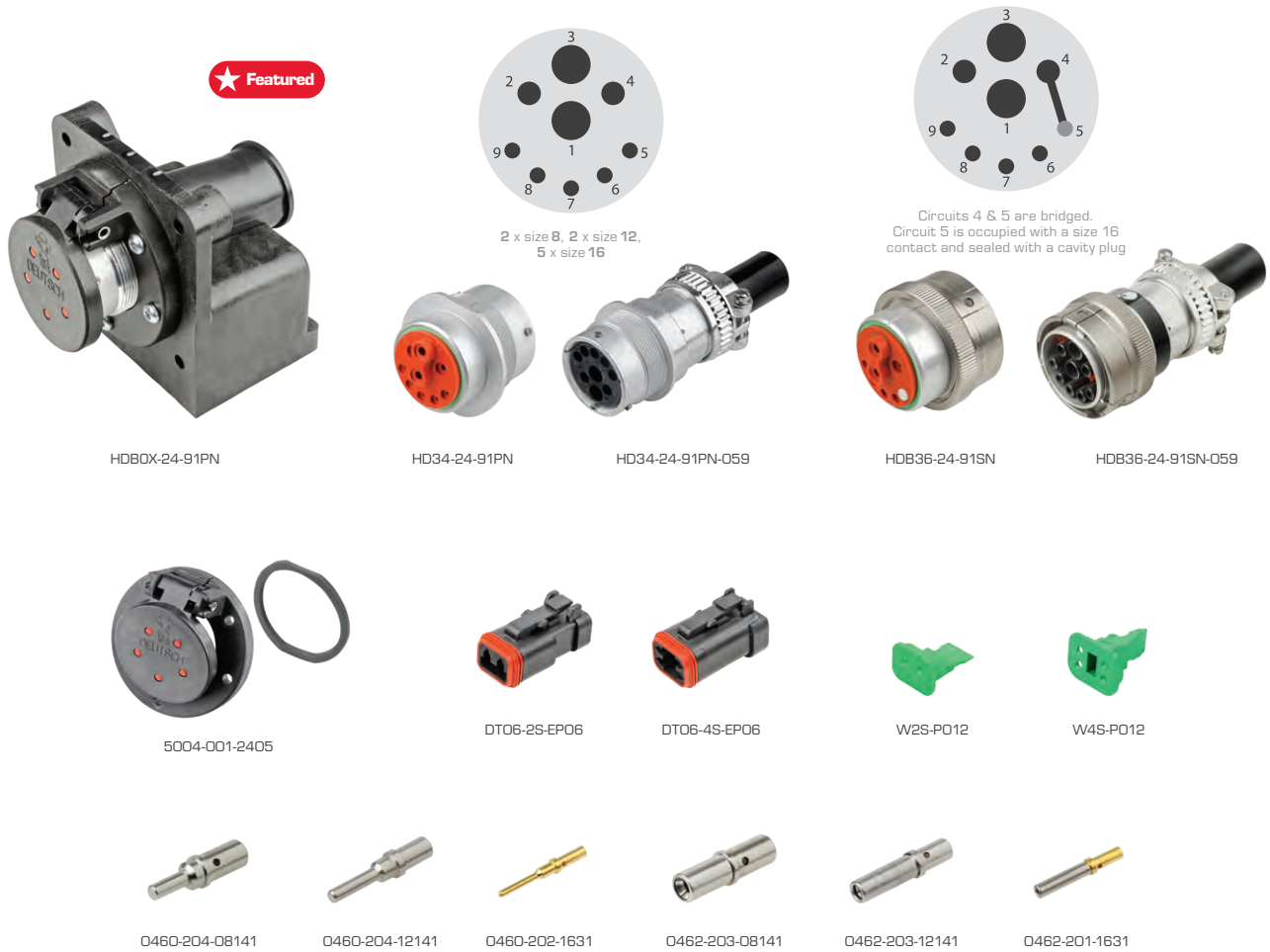


Houses
1 x DT13-2P, 1 x DT13-4P

Mates with
DT06-2S-EPO6
DT06-4S-EPO6



Houses
1 x HD34-24-91PN
Mates with
HDB36-24-91SN



HD30 Breakaway ★

Part No.	Description	Cavities
HDBOX-24-91PN	Breakaway CAN Termination Assembly	15
HD34-24-91PN	HD30 Series – Receptacle. Breakaway coupling	9
HD34-24-91PN-059	HD30 Series – Receptacle. Breakaway coupling incorporating strain relief	9
HDB36-24-91SN	HD30 Series – Plug. Breakaway coupling. Circuits 4 & 5 are bridged	9*
HDB36-24-91SN-059	HD30 Series – Plug. Breakaway coupling incorporating strain relief. Circuits 4 & 5 are bridged	9*
* Circuit 5 is occupied with a non-removable size 16 contact and sealed with a cavity plug		
5004-001-2405	Dust cap suits shell size 24 HD34/HDP24 receptacles. Includes gasket	
DT06-4S-EP06	DT Series – Plug – Enhanced Seal Retention and End Cap – Black	4
DT06-2S-EP06	DT Series – Plug – Enhanced Seal Retention and End Cap – Black	2
W2S-P012	DT Series – Wedgelock – Plug – Green	2
W4S-P012	DT Series – Wedgelock – Plug – Green	4
O460-204-08141	Contact – Pin – Solid – Size 8	
O460-204-12141	Contact – Pin – Solid – Size 12	
O460-202-1631	Contact – Pin – Solid – Gold-plated – Size 16	
O462-203-08141	Contact – Socket – Solid – Size 8	
O462-203-12141	Contact – Socket – Solid – Size 12	
O462-201-1631	Contact – Socket – Solid – Gold-plated – Size 16	





- Range of data cable available – Standard, Medium, Heavy Duty and Shielded.
- Noise suppressing ferrites available – Ø 19.3mm & Ø 27mm.
- Wide range of crimping tools available.
- HDT-48-00 crimps a wide range of contact sizes with no need to change out dies or locators.
- Ratcheting tools will not release contact until a full crimp is completed.

103349, 103349-302



Made in North America



103349B, 103349R

Wiring, Accessories & Tools – CAN Data Cable

Part No	Description	Core Colours	Roll Length (m)	Nom. Area (mm ²)	Nom. O.D. (mm)	Conductor	Max. Operating Temperature (°C)
103349	2 Core. Standard Duty	Yel/Grn	*	0.5	6.14	7 / 0.30	125
103349-302	2 Core. Standard Duty	Yel/Grn	302	0.5	6.14	7 / 0.30	125
103349B	2 Core. Medium Duty	Yel/Grn	*	0.5	7.46	19 / 0.20	125
103349R	2 Core. Heavy Duty	Yel/Grn	*	0.6	7.75	19 / 0.20	125

*** This product is modified/cut to customer specifications and is not returnable for credit.**

Made in North America



Wiring, Accessories & Tools – Serial Data Cable

Part No	Description	Core Colours	Roll Length (m)	Nom. Area (mm ²)	Nom. O.D. (mm)	Conductor	Max. Operating Temperature (°C)
OL20-1600-22	2 Core. Standard Duty	Wht/Blk	60	0.72	5.45	16 / 0.30	60

PH275BK, PH275BK-100



PH375BK, PH375BK-100



Wiring, Accessories & Tools – Shielded Drain Wire

Part No	No. of Cores	Colour	Roll Length (m)	Nom. Area (mm ²)	Nom. O.D. (mm)	Conductor	Max. Operating Temperature (°C)
PH275BK	2	Red/Blk	*	0.75	7.2	24 / 0.20	90
PH275BK-100	2	Red/Blk	100	0.75	7.2	24 / 0.20	90
PH375BK	3	Red/Blk/Wht	*	0.75	6.8	24 / 0.20	90
PH375BK-100	3	Red/Blk/Wht	100	0.75	6.8	24 / 0.20	90

*** This product is modified/cut to customer specifications and is not returnable for credit.**

Noise Suppression

Electromagnetic interference (EMI), also referred to as noise, is disturbance that affects an electrical circuit due to either electromagnetic induction or electromagnetic radiation emitted from an external source.



The disturbance may interrupt, obstruct, or otherwise degrade or limit the effective performance of the circuit. These effects can range from a simple degradation of data to a total loss of data.

A simple solution to electrical interference from noise is the utilisation of suppression ferrites. Ferrites are moulded metal powders, (ceramic), cast into various shapes and sizes.



Ferrite with Key (7427155)

A typical style of ferrite are clip-on chokes/suppressors. Simply open and snap around the wires or cables emitting the noise.

You can stack as many as you want over a single pair or bundle of wires. In situations with severe noise problems multiple ferrites can be stacked.

Ferrites are non-conductive so can be used almost anywhere, including on higher voltage power lines and battery/inverter cables.



28A5776-0A2



7427155

Wiring, Accessories & Tools – Ferrites

Part No.	Description
28A5776-0A2	Ferrite core. Inside Ø 19.3mm. Impedance – 210 Ohm @100MHz
7427155	Ferrite core split with locking key. Inside Ø 27mm. Impedance – 327 Ohm @ 100MHz



Accessories



114009



D08



114008



0411-353-0805



D12



114010



0411-337-1205



D14



0411-291-1405



D16



0411-310-1605



0411-336-1605



0411-204-1605



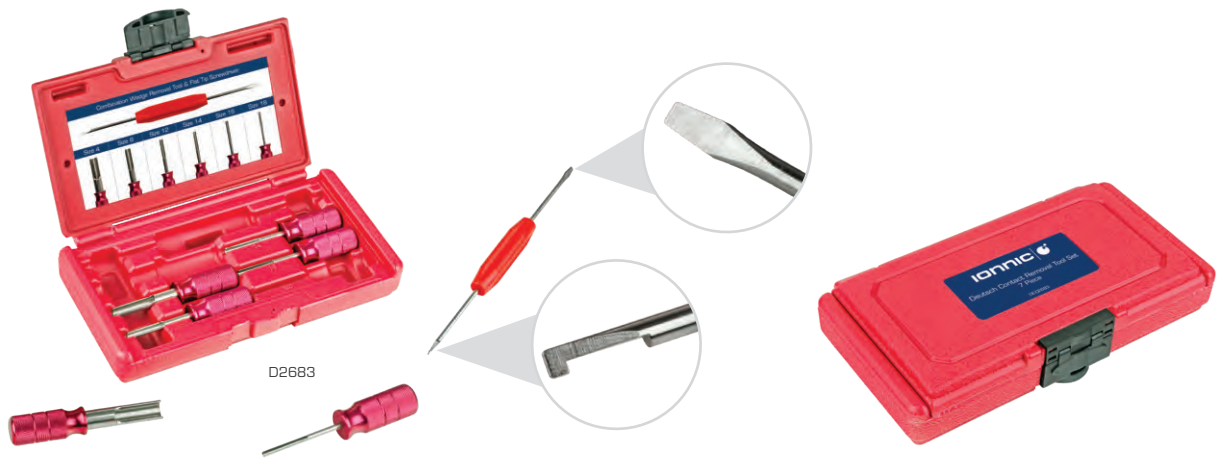
D20



0411-240-2005

Wiring, Accessories & Tools – TE DEUTSCH Contact Removal Tools

Part No.	Contact Size (TE DEUTSCH)	Wire Gauge Size (AWG)	Colour	Notes
114009	4	6	White	
D08	8	8	Magenta	Stainless steel shaft. Anodized aluminium handle
114008	8	10, 8	Green	
0411-353-0805	8	10, 8	Green	Extended
D12	12	12	Magenta	Stainless steel shaft. Anodized aluminium handle
114010	12	12	Yellow	
0411-337-1205	12	14, 12	Orange	Extra Thin Wall (E-Seal)
D14	14	14	Magenta	Stainless steel shaft. Anodized aluminium handle
0411-291-1405	14	16, 14	Green	
D16	16	16	Magenta	Stainless steel shaft. Anodized aluminium handle
0411-310-1605	16	18, 16	Light Blue	
0411-336-1605	16	18, 16	Blue	Extra Thin Wall (E-Seal)
0411-204-1605	16	18, 16	Dark Blue	
D20	20	20	Magenta	Stainless steel shaft. Anodized aluminium handle
0411-240-2005	20	24, 20	Red	



Wiring, Accessories & Tools – TE DEUTSCH Removal Tool Set

Part No.	Description	Contact Size (TE DEUTSCH)
D2683	7 piece contact removal tool set. Includes multi-use hook tool / flat-head screw driver	4, 8, 12, 14, 16, 20



Wiring, Accessories & Tools – Removal Tools

Part No.	Suits
P-12094429	Metri-Pack GT150, GT280, 150, 280, 630 Pull-to-Seat
P-12094430	Metri-Pack 280, 480, 630, 800 Series Pin Tangless
P-12014012	Weather-Pack
7704489	Generic removal tool. Contact cavity \varnothing 5.2mm
7704496	Generic removal tool. Contact cavity \varnothing 3.3mm
HT-7200	Generic removal tool. Contact cavity \varnothing 2.9mm
DET-RT	Multi-use hook tool
DET-RT1	Multi-use hook tool & flat-head screw driver

Accessories

Made in North America



DET48



HDT-04-08



DET12, DET16, DET20



D2681



D2682



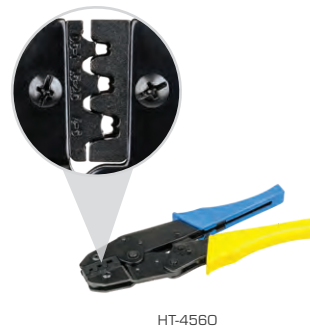
HDT-50-00



HDT-48-00

Wiring, Accessories & Tools – Crimpers – TE DEUTSCH – Solid Contacts

Part No.	Description	Contact Size (TE DEUTSCH)	Crimp Style
DET48	Two handed	8, 4	2 indent
HDT-04-08	Two handed	8, 4	2 indent
DET12	Ratcheting	12	4 indent
DET16	Ratcheting	16	4 indent
DET20	Ratcheting	20	4 indent
D2681	Ratcheting	20, 16, 12	2 indent
D2682	Ratcheting	20, 16, 12	2 indent
HDT-50-00	Ratcheting	20, 16, 12	1 indent
HDT-48-00	Ratcheting	20, 16, 12	4 indent



Wiring, Accessories & Tools – Crimpers

Part No.	Description	Suits	Crimp Range (mm ²)
P-12014254	Ratcheting. Attaches seal & cable in one action	Weather-Pack	0.5–0.8, 1.0–2.0
P-12071687	480 & 630 Series	Weather-Pack & Metri-Pack	3.0–5.0
P-12085270	Ratcheting	Weather-Pack & Metri-Pack	0.5–0.8, 1.0–2.0
HT-4300	Parallel jaws	Weather-Pack & Metri-Pack 150 & 280 Series	0.35, 0.5–0.8, 1.0–2.0, 3.0
HT-4301	Parallel jaws	TE Superseal	0.35–0.5, 0.75, 1.0, 1.5
HT-4220	Parallel jaws	Non-insulated contacts	0.2–0.3, 0.3–0.5, 0.5–0.8, 0.8–1.3, 1.3–2.0
HT-4560	Ratcheting	Non-insulated contacts	0.5–1, 1.5–2.5, 4–6



Accessories



DTT-16-00



D7000

D7000 6 Removable Dies	
Die 1 14, 12AWG	Die 2 12, 10AWG
Die 3 18, 16, 14AWG	Die 4 20, 18, 16AWG
Die 5 20, 18-16AWG	Die 6 16, 14, 12AWG

Wiring, Accessories & Tools – Crimpers – TE DEUTSCH – Stamped & Formed

Part No.	Description	Crimp Range (AWG)
DTT-16-00	Ratcheting, 1 indent crimper "U" crimp	16 & 14
D7000	Ratcheting crimp tool set with 6 removable dies. 1 indent crimper "U" crimp	

5 Piece Crimp Tool Set for Packard™ Contacts

Tool Set contains tools suitable for:

- AMP Superseals
- Weather-Pack
- Metri-Pack 150, 280, 480 & 630 series
- Micro-Pack 064, 100 & 100W series.
- GT 150, 280, 630 series
- And other brands including Molex, Yazaki, Sumitomo etc

All housed in a handy storage tray.

Also included in the kit is a 32 page instruction manual detailing tool specifications as well as an OEM contact number/tool number matrix.

All tools in kit are premium quality – made in the USA.



Made in North America

Wiring, Accessories & Tools – IONNIC Crimping Tool Set – Packard Contacts

Part No.	Description
HT-K2680	5 piece crimping tool set for wide range of contacts, includes instruction manual Suits AMP Superseals, Weather-Pack and Metri-Pack contacts among others. For full list see above